

# Trimming the Miniature Schnauzer

Clipper chest with #10, leaving a short fringe below forechest.

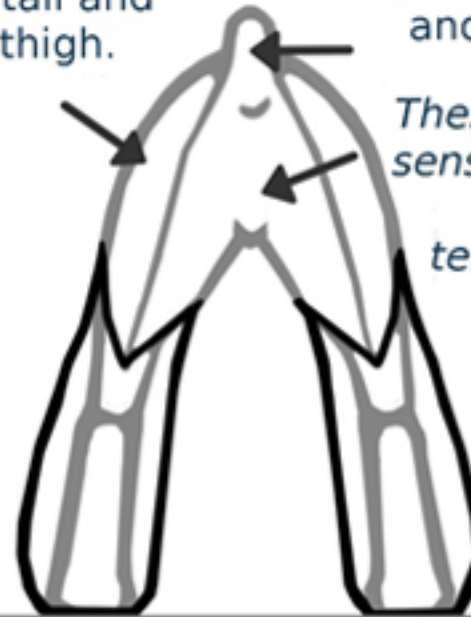
Blend chest into leg furnishings, and tidy fringe with scissors.

Clipper hair from "armpits" to prevent mats.

Feet are neatly rounded when viewed from all directions



#10 on tail and outer thigh.



#30 under tail, inner thigh, belly and genitalia.

*These areas are sensitive. Check blade temperature often.*



Clipper to navel

Copyright American Miniature Schnauzer Club

Illustration by Catherine McMillan



Remove hair from between pads with #30 or scissors.

